

Caldmore Primary Academy - Social Distancing and Academy Pupil Capacity Plan

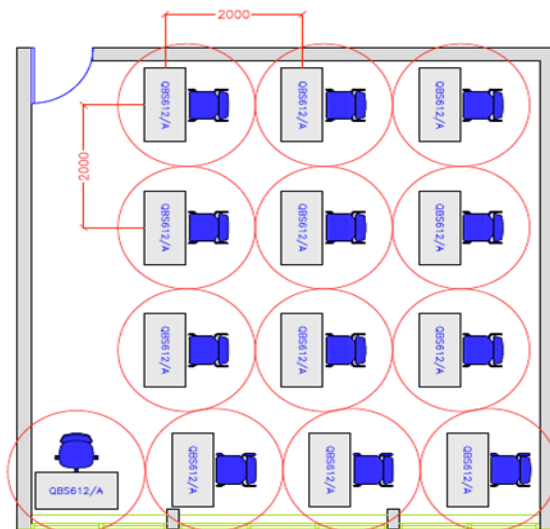
Considering social distancing guidelines along with the suitability and size of each space within our academies we have developed a ratio to safely accommodate pupils whilst still meeting PHE Social distancing guidelines. The following is an example of the number of pupils that can be accommodate in a standard teaching and hall space along with a teacher:

- 55M2 Classroom – 12 Pupils
- 135M2 Hall – 30 Pupils

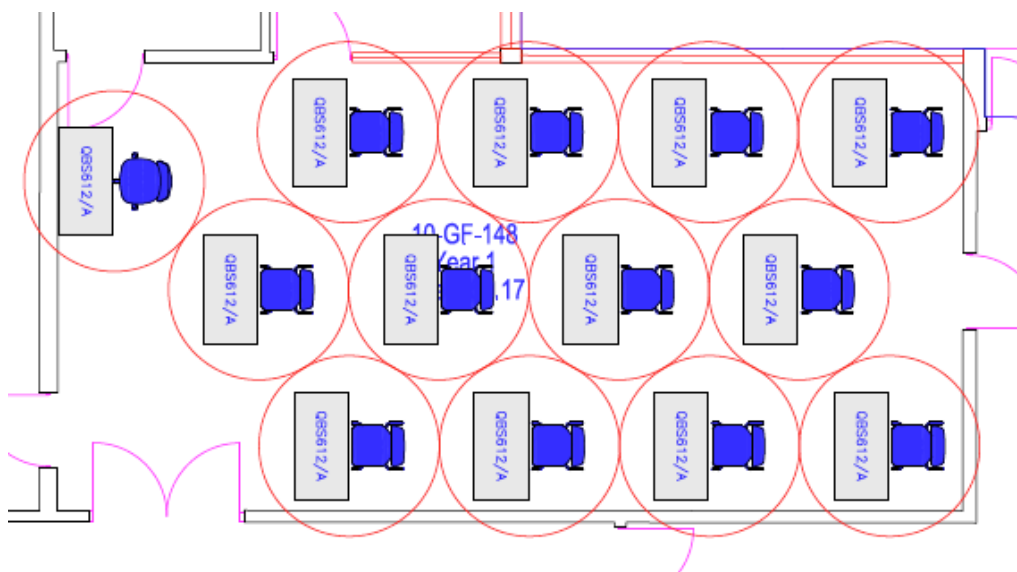
The ratio adapts dependant on size and suitability of each space as not all of our academies are built to the standard BB103 space regulation. This has been developed using our capacity data, measured plans and knowledge of each site.

We have worked with an architect to draw up plans which outline the maximum safe spacing as detailed above:

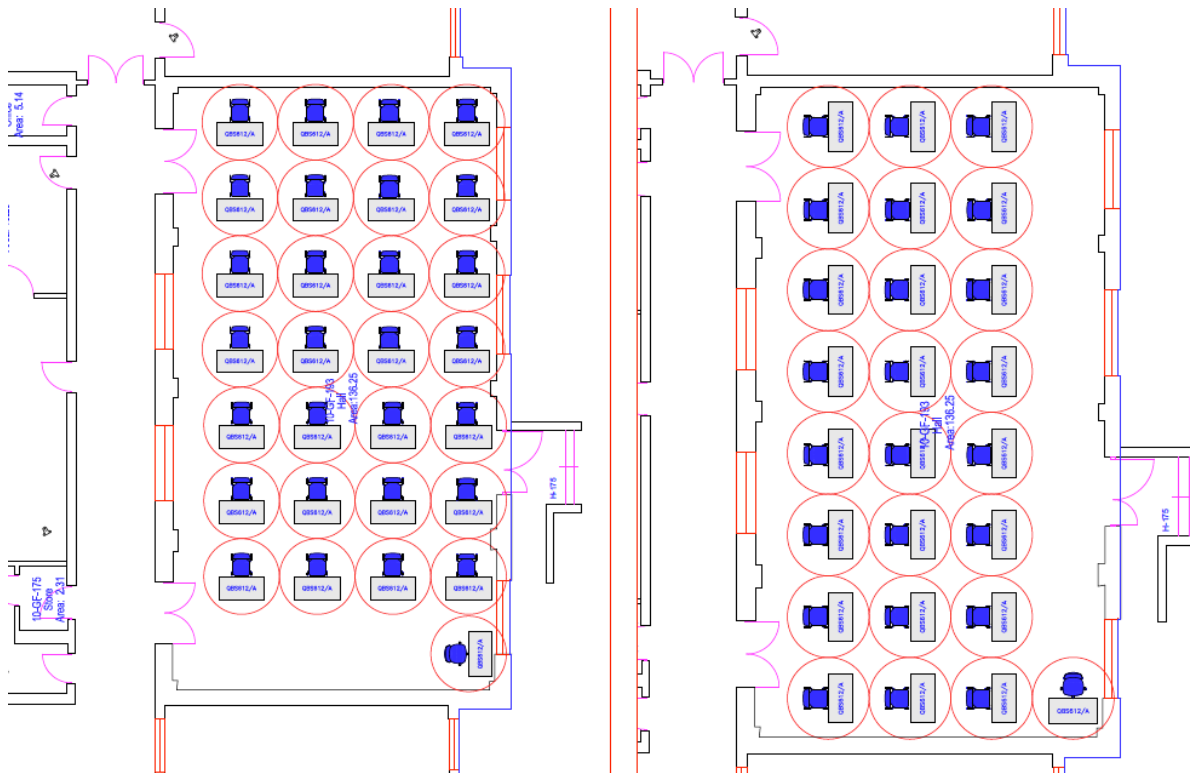
55M2 classroom examples meeting social distancing requirements



2 metre Spacing



135M2 classroom examples meeting social distancing requirements



We have then taken this a process a step further and reviewed the available space at Caldmore Primary Academy. This is based on:

- The size of each space within building
- The suitability of each space taking into account fixed furniture and required teachers space
- Location of toilet facilities
- Size of corridor/circulation areas
- Number of pupils expected to return in each year group
- Specific needs of individual pupils

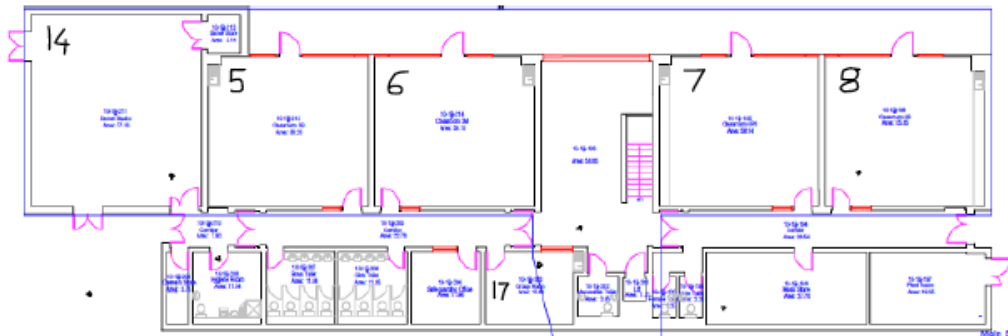
This methodology has identified the following number of pupils can be safely occupy each class space within the academy and still meet social distancing requirements. The following table outline all space within the academy and is numbered in line with the corresponding site plan:

SITE PLAN

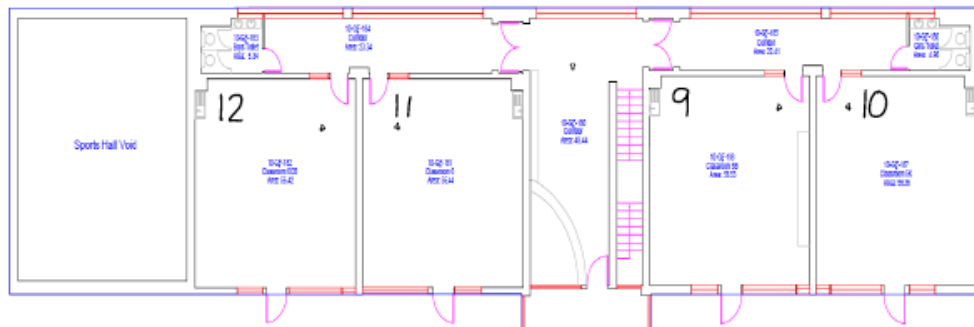
Caldmore Social Distancing Plan 30.4.20

ROOM NUMBER					MAXIMUM PUPIL NUMBER
1	Classroom	10-GF-176	General Teaching	71.55	14
2	Classroom 1A	10-GF-164	General Teaching	74.83	14
3	Classroom 2A	10-GF-189	General Teaching	57.28	12
4	Classroom 2J	10-GF-191	General Teaching	55.48	12
5	Classroom 3B	10-1B-212	General Teaching	56.2	12
6	Classroom 3M	10-1B-214	General Teaching	56.1	12
7	Classroom 4PS	10-1B-195	General Teaching	56.14	12
8	Classroom 4S	10-1B-196	General Teaching	55.85	12
9	Classroom 5B	10-GF-188	General Teaching	56.53	12
10	Classroom 5K	10-GF-187	General Teaching	56.36	12
11	Classroom 6	10-GF-181	General Teaching	56.44	12
12	Classroom 6CB	10-GF-182	General Teaching	56.42	12
13	Classroom RF	10-GF-154	Reception Class	71.71	14
14	Dance Studio	10-1B-211	Dance	77.33	14
15	Food Technology	10-GF-123	Technology Food	34.53	7
16	Group Room	10-GF-130	Group Room	26.58	5
17	Group Room	10-1B-203	Group Room	15.66	2
18	Hall	10-GF-132	Hall	179.2	35
19	Library	10-GF-127	Library	52.48	11
20	Nursery	10-GF-142	Nursery	90.49	15
21	Reception Class R	10-GF-148	Reception Class	67.34	13

Basement



Ground Floor



Main Block

