

1 Filip is working out $607 + 395$

He rounds his numbers to the nearest hundred to estimate the answer.

a) Complete the sentences.

607 rounded to the nearest hundred is

395 rounded to the nearest hundred is

Filip's estimate for the answer is

+ =

b) Use column addition to work out the actual answer.

	Th	H	T	O
		6	0	7
+		3	9	5
<hr/>				

2 Alex is working out $7,958 - 6,103$

Alex rounds her numbers to the nearest thousand to estimate the answer.

a) Complete the sentences.

7,958 rounded to the nearest thousand is

6,103 rounded to the nearest thousand is

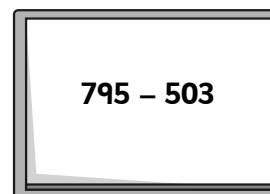
Alex's estimate is - =

b) Use column subtraction to work out the actual answer.

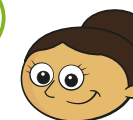
	Th	H	T	O
	7	9	5	8
-	6	1	0	3
<hr/>				

The actual answer is

3 Mr Howell writes a subtraction on the board.



I estimate the answer will be close to 200 because $700 - 500 = 200$



What mistake has Dora made?

Write a better estimate.

4 a) Tom is estimating an addition calculation.

His estimate is $3,000 + 1,000 = 4,000$

Write three possible additions Tom could be estimating.

b) Dani is estimating a subtraction calculation.

Her estimate is $£600 - £100 = £500$

Write three possible subtractions Dani could be estimating.

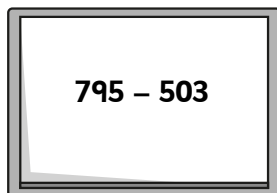


b) Use column subtraction to work out the actual answer.

	Th	H	T	O	
	7	9	5	8	
-	6	1	0	3	

The actual answer is

3 Mr Howell writes a subtraction on the board.



I estimate the answer will be close to 200 because $700 - 500 = 200$



What mistake has Dora made?

Write a better estimate.

4 a) Tom is estimating an addition calculation.

His estimate is $3,000 + 1,000 = 4,000$

Write three possible additions Tom could be estimating.

b) Dani is estimating a subtraction calculation.

Her estimate is $£600 - £100 = £500$

Write three possible subtractions Dani could be estimating.

5 Complete the table. Show your workings.

Question	Estimated answer	Accurate answer
$3,970 \text{ km} - 1,850 \text{ km}$		
$7,076 - 852$		
$7,076 - 652$		
$1,994 \text{ ml} + 1,994 \text{ ml}$		

6 Whitney and Dexter are estimating the answer to $2,706 - 1,394$

Whitney's estimate is $3,000 - 1,000 = 2,000$

Dexter's estimate is $2,700 - 1,400 = 1,300$

Whose estimate is more accurate?

Why?

7 A forest has 2,638 trees.

1,172 more trees are planted.



a) Use rounding to estimate the number of trees in the forest now.

b) Work out the actual number of trees in the forest.

c) How accurate was your estimate?